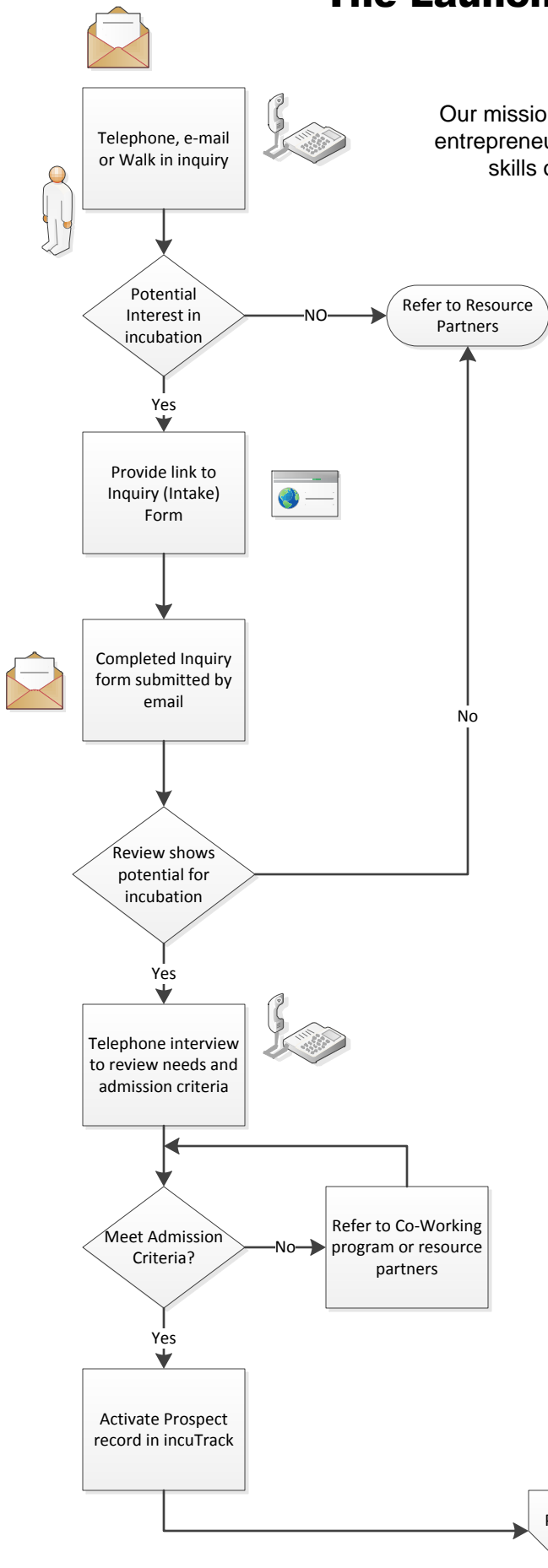


Application Process

The Launch Pad @ Francis Tuttle

Welcome to the Launch Pad @ Francis Tuttle!
 Our mission is to positively impact regional economic development by fostering entrepreneurship and enterprise growth. The Incubator strives to enhance the skills of entrepreneurs and improve the viability of small businesses.



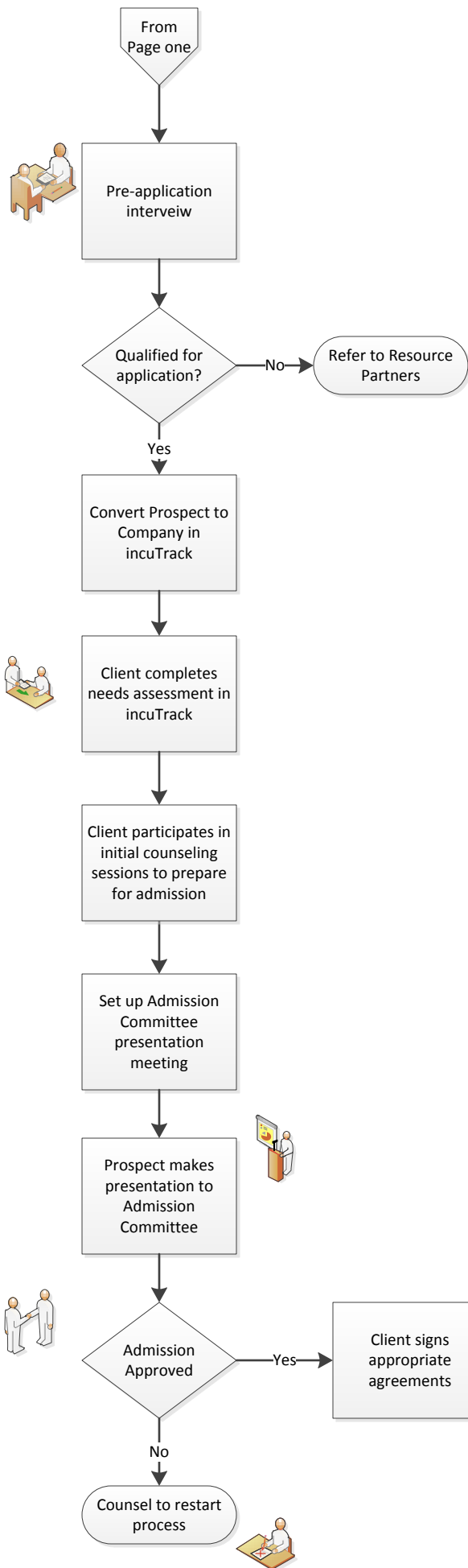
Resource Partners

- Francis Tuttle Business & Industry Services
- Francis Tuttle Business & Entrepreneurial Services
- Launch Pad Advisory Council
- OK Small Business Development Center
- SCORE
- University of Central Oklahoma College of Business
- REI
- i2E
- Chambers of Commerce
- Economic Development Authorities
- Oklahoma Business Incubation Association
- National Business Incubator Association

Admission Criteria

- Start-up or early stage business within the last two years?
- Viable product or service, are you marketable and realistic?
- Business Plan, a written road map defining a path from the starting point and a timeline?
- Economic Impact, can you show an impact for a specific geography with defined job creation objectives?
- Initial capitalization, does your company have adequate capital or a projected revenue stream to cover initial operating expenses?
- Entrepreneurial Capability, adequate technology, educational or experience to develop your product or service in this market?
- Coachable, can you demonstrate a willingness to conduct business in an open, collaborative and cooperative fashion to include meeting the coaching and consulting requirements of the incubator?

Application Process The Launch Pad @ Francis Tuttle



The Admissions Committee

FTTC BIC Staff

- Peggy Geib
- Lori Broyles
- Judy Robins
- Fred Green

At least 3 members of Advisory Council

- Keith Kersten, Arvest Bank
- Brian Blundell, Bank First
- Todd McKinnis, Rubenstein & Pitts
- Tynia Watson, Crow & Dunlevy
- Charles Lamb, Mayor – City of Edmond
- Phil Pardun, Pelco Products
- Scott Meachem, i2E
- Scott Booker, UCO Academy of Cont. Music
- Ken Moore, Edmond Chamber of Commerce
- Janet Yowell, Edmond EDA
- Avilla Williams, Integris Health
- Rusty Hale, Hale & Company
- Ray Hibbard, Edmond Life & Leisure
- Tom Freiderman, Francis Tuttle